



# 深圳超級版圖：共建全聯接生態交通

Shenzhen Connectography: Building a  
Better Connected EcoMobility

# 深圳：中國人口密度最高的特大城市

SHENZHEN: China's mega city with highest population density

土地資源：陸域1997平方公里  
Land Area: 1997km<sup>2</sup>

經濟總量：GDP1.95萬億  
GDP: 1.95 trillion

實際人口：超過1886萬  
Population: over 18.86 million

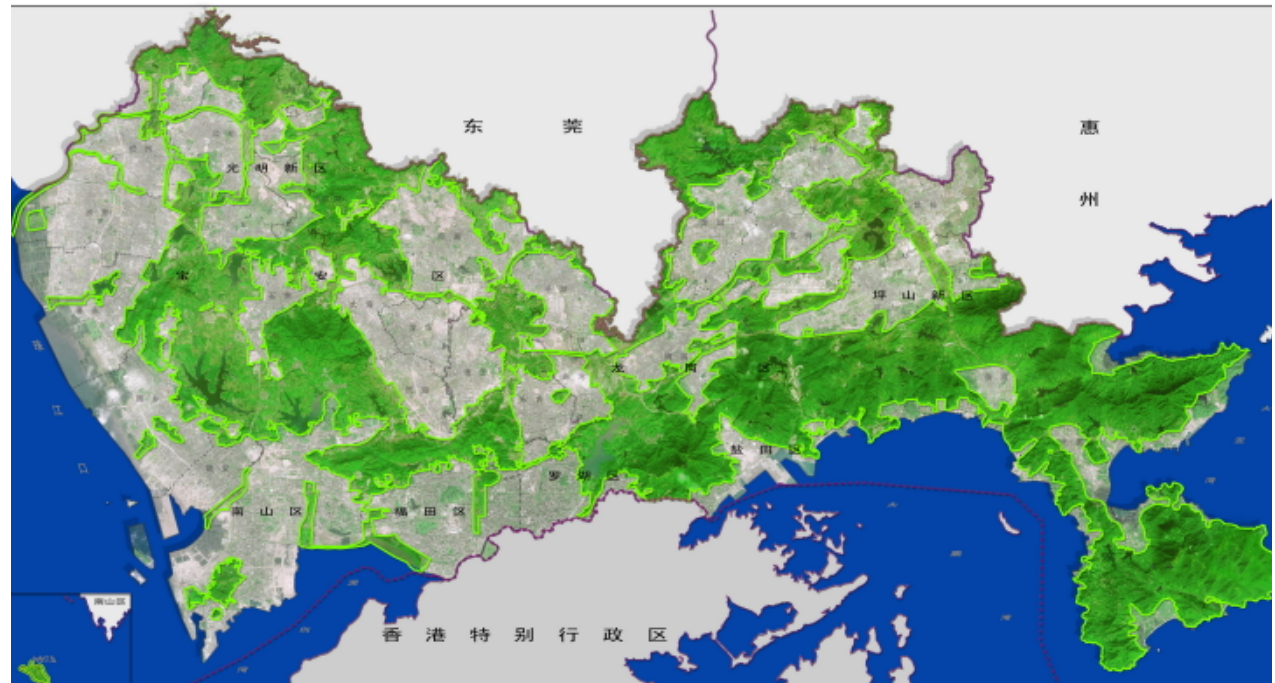


# 嚴守基本生態控制線

Sticking with basic ecological control line mechanism

**974** Km<sup>2</sup> **48.9%**  
基本生态控制线  
范围内的土地面积 占全市陆域面积

The land area within the basic ecological control line represents 48.9% of the total city land area



深圳市基本生态控制线范围图 (2013)

Basic Ecological Control Line Map of Shenzhen (2013)

生態城市 | 公園911座，城市綠道2400公里  
Eco-City | 911 parks, 2400km greenway

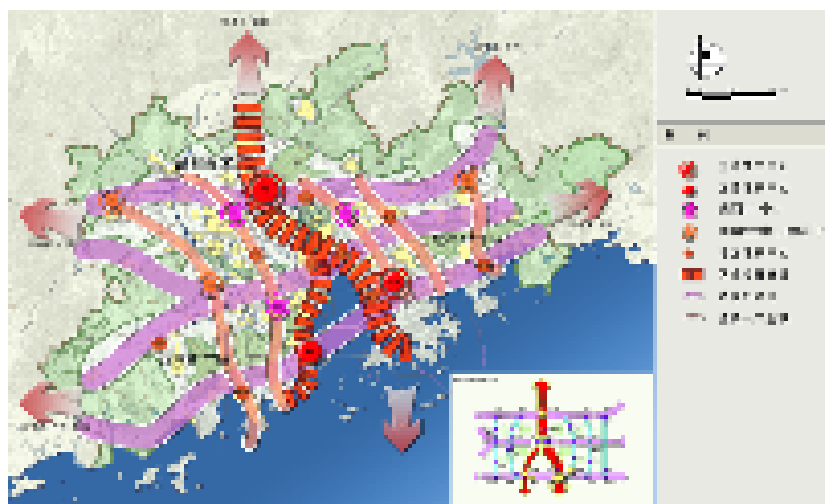


被譽為“國家園林城市、世界花園城市”，獲得中國人居環境獎  
Shenzhen is honored as “National Garden City & International Garden City”, with  
China’s Habitat Scroll of Honor Award



# 交通建設 | 建成城市道路6400多公里

## Transportation | over 6400km city roads



加強與粵港澳大灣區基礎設施的聯通，和周邊十座城市緊密相連  
預計2020年，可以實現1小時可達粵港澳大灣區。

Improving the infrastructure integration of Guangdong-Hong Kong-Macao Greater Bay Area, connecting 10 nearby cities.the internal travels in Guangdong-Hong Kong-Macao Greater Bay Area will be within an hour by 2020.

## 讀數

到2020年，將基本建成區域快速交通體系

城市軌道線規劃：20條線路，總里程753公里

新增公交專用道：200公里

新增自行車專用道：≥600公里

全市平均路網密度要提升**10%**

通車總里程達到**7500**公里以上

## Data

Till 2020

Urban rail transit : 20 lines, total 753km

New Bus Lane: 200km

New Bike Lane: ≥600km

The regional rapid transit system will be mostly built and the city's average road density will be **10%** higher.

The road system length will be over **7500**km



## 私家车增速放缓，2016年同比仅增加1.0%

The growth of private cars slows down, the total amount of private cars is only 1.0% more than 2016

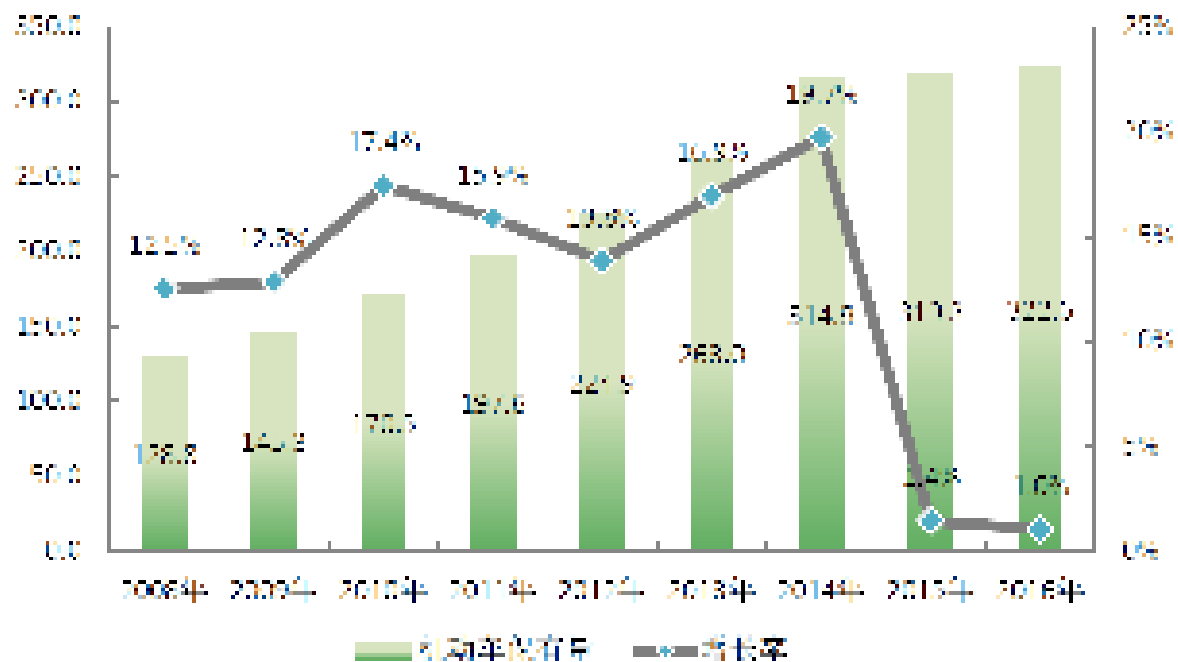


图 3-1 历年深圳市机动车保有量 (单位: 万辆)

数据来源: 深圳交警



# 交通不堪重负 The transit system is overloaded

人均道路长度仅为0.36米  
The road length per capita is only 0.36m

每天平均约7亿条交通数据  
About 700 million traffic information records per day



Until the end of 2016, the total motorcar amount of Shenzhen is over 3.22 million.

# 整合服务 | 政府主导

## Cohesive Public Service | Government-led

### 智能交通建设：搭建交通信息共享平台

Intelligent Transit: building a traffic information sharing platform



图-交通基础信息共享平台  
Basic traffic information sharing platform

# 交通运行监测：市民参与监督和管理

Traffic monitoring: public engaged monitoring and governance

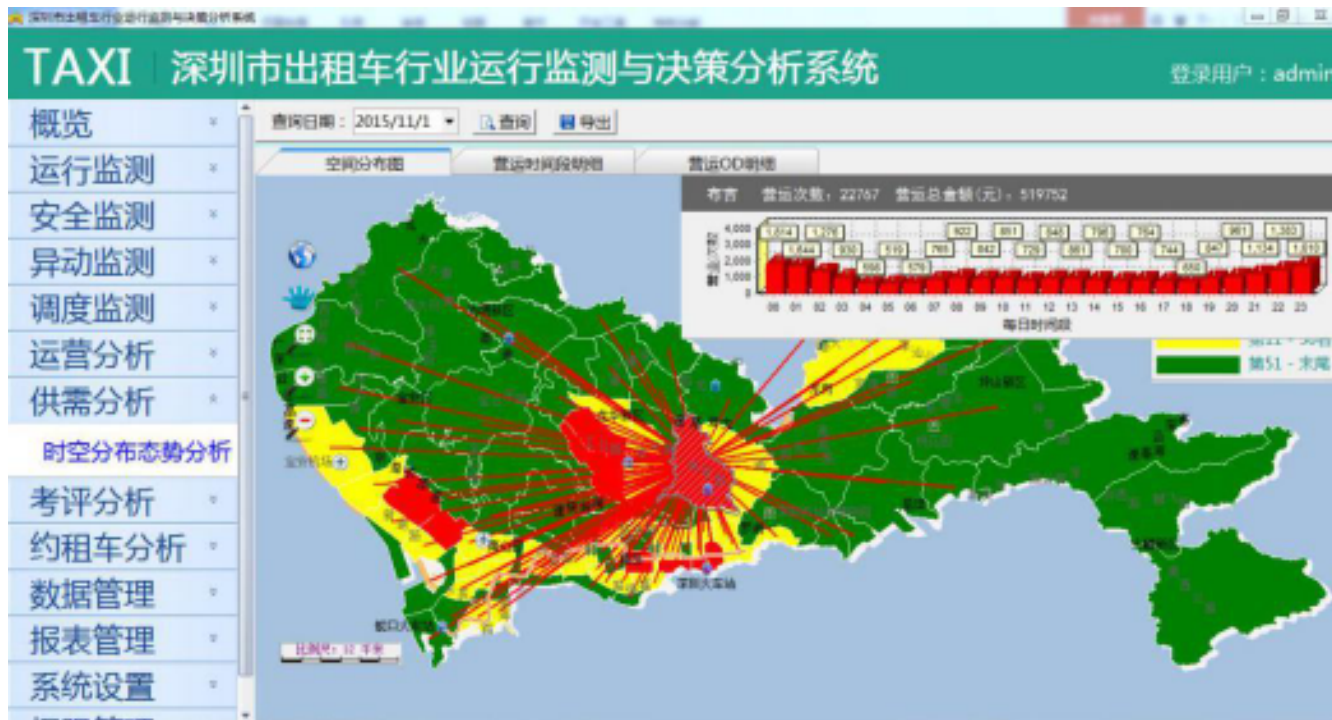


图-深圳市出租车运行监测与决策分析系统  
Shenzhen taxi management system

## 智能产业合作：与深圳本地优秀企业联手

Smart industry cooperation: cooperating with excellent local firms

深圳交警+华为

Shenzhen traffic police +  
Huawei

深圳交委+滴滴出行

Shenzhen Traffic and  
Transport Committee +  
Didi Chuxing

.....



图-华为智慧交通“平台+生态”解决方案

“Platform + ecosystem” intelligent transit solution

# 整合服务 | 市场主导

## Cohesive Public Service | Market-led

深圳巴士+滴滴出行

SHENZHEN BUS GROUP CO. Ltd. + Didi Chuxing

腾讯公司+深圳巴士+深圳通

Tencent + SHENZHEN BUS GROUP CO. Ltd. + Shenzhen Tong Ltd.

深圳巴士+比亚迪+中兴

SHENZHEN BUS GROUP CO. Ltd. + BYD Company + ZTE

.....

2017年底公交车纯电动化率100%

每年减少二氧化碳排放近118万吨

减少其他废气污染物排放约960吨

Until the end of 2017, all Shenzhen buses will be 100% electric.

Thereby, CO2 emission will be reduced about 1.18 million tons per year.

Other gas pollutant emissions will be reduced about 960 tons per year.



# 整合服务 | 社会主导 Cohesive Public Service | Society-led

蛇口基金会：深圳无车日 Shekou Community Welfare Fund: Shenzhen car free day



# 城市梦工厂：摩拜深圳+深圳百公里

Urbandreamworks: Mobike Shenzhen + Shenzhen 100km



# 摩拜深圳：让自行车回归城市    Mobike: let bikes back to city

城市梦工厂构建兼具政府治理、企业创新和市民权利的自行车生态

Urbandreamworks builds up biking eco-system taking government governance, business innovation and civil rights into account.





## 深圳百公里：从徒步到生态出行的引领者

Shenzhen 100km: the leader of eco-travel

城市梦工厂促成百公里专项基金成立，用以推广环境保护公众教育，推动生态步道规划和建设 Urban Dreamworks promotes the setup of the "100km Fund" to introduce the public education about environment protection as well as push the greenway planning and construction forward.



**THANK YOU**

**S.Q.Leung**

Wechat : jh-sama

Email : [liangsq@upr.cn](mailto:liangsq@upr.cn)