



Clean, Green, Scenic: Climate Action and Sustainable Transportation in Portland, Oregon

Leah Treat
Director
Portland Bureau of Transportation



PBOT
PORTLAND BUREAU OF TRANSPORTATION

CITY OF PORTLAND

POPULATION

Portland

619,360

Kaohsiung

2.7 million





Mt. Hood



Bikes



Beer & Coffee



IFC PORTLANDIA



Forest Park



Neighborhoods



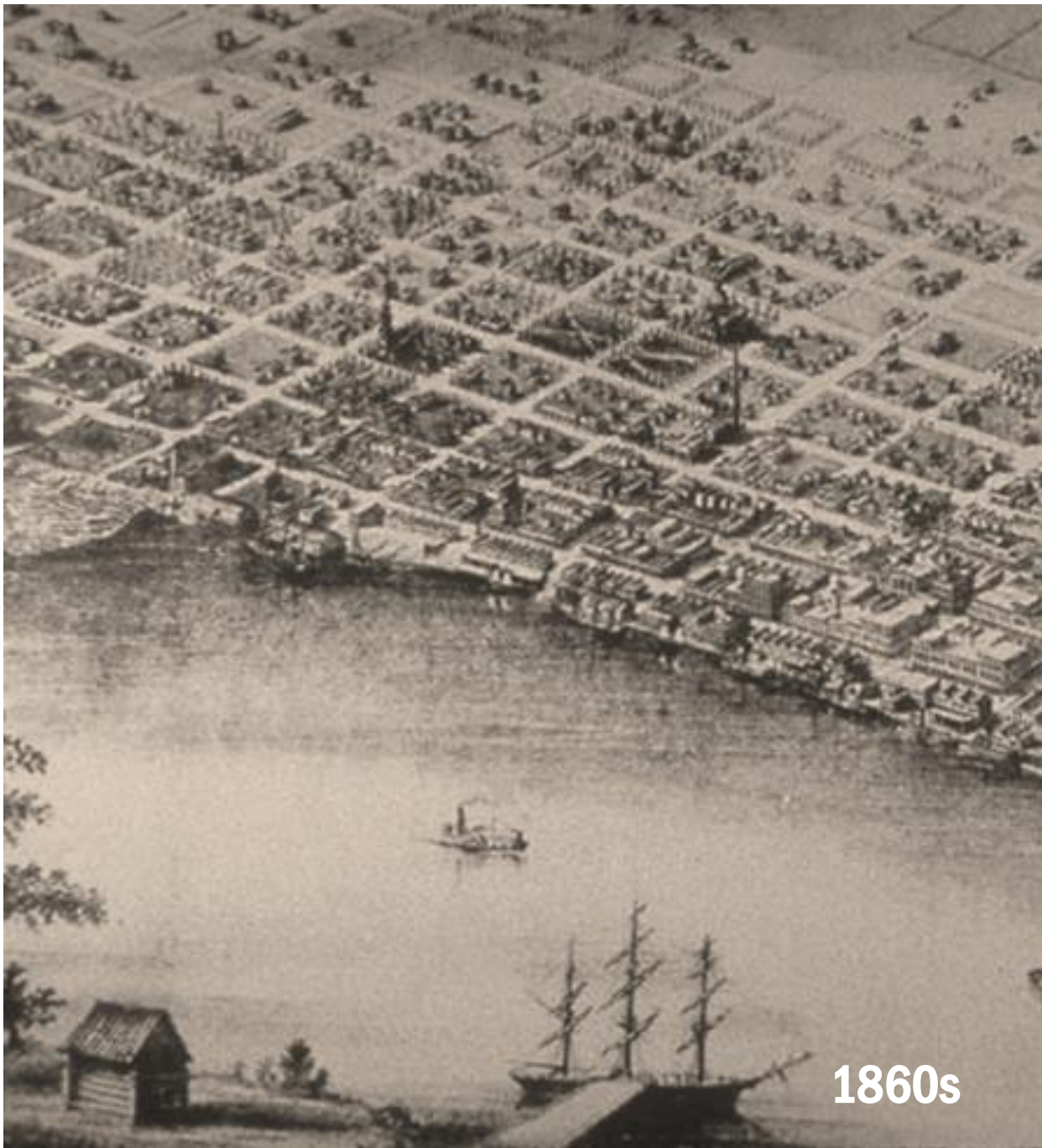
Food carts



KEEP PORTLAND WEIRD



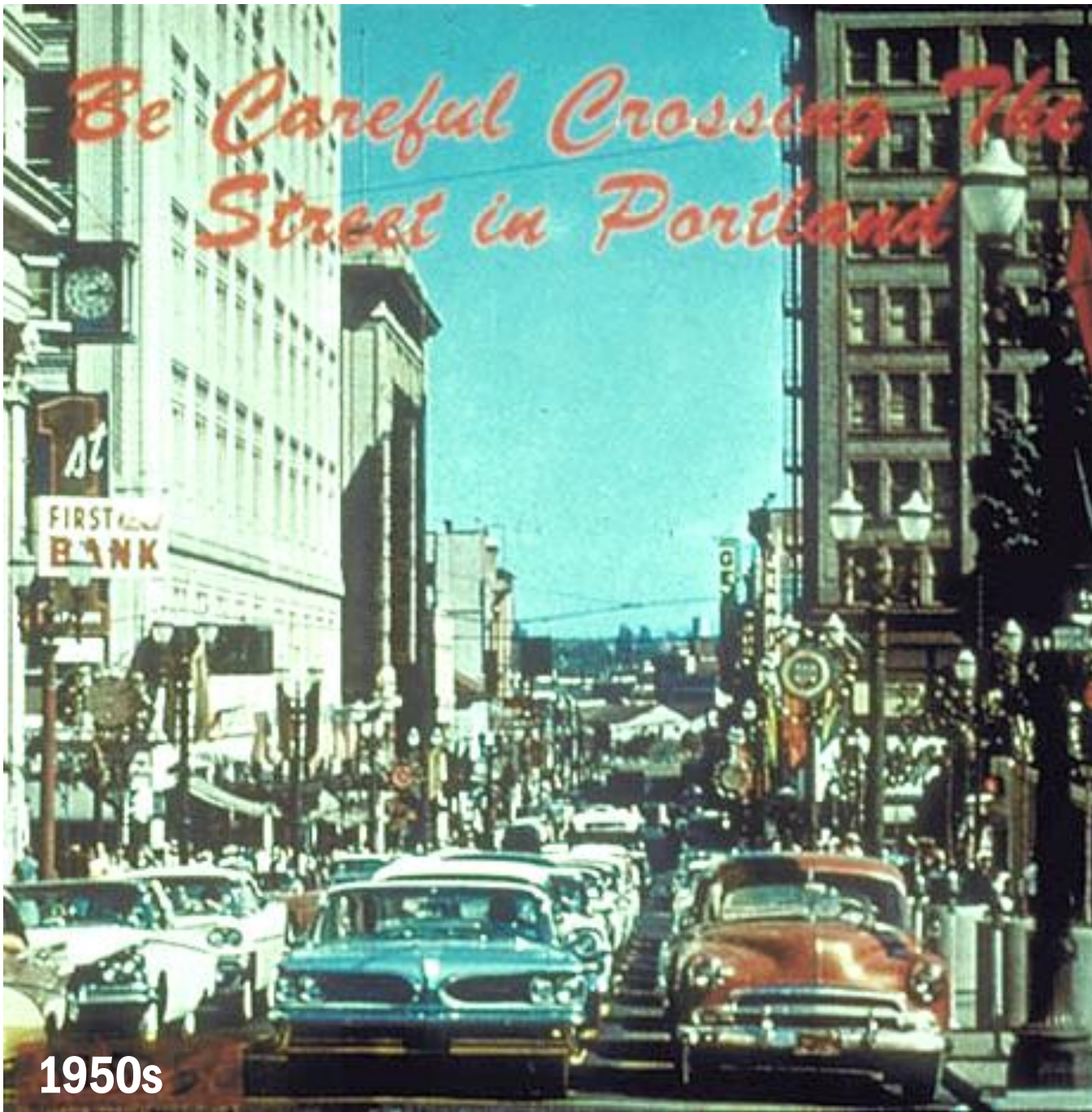
Environmental Conscientiousness



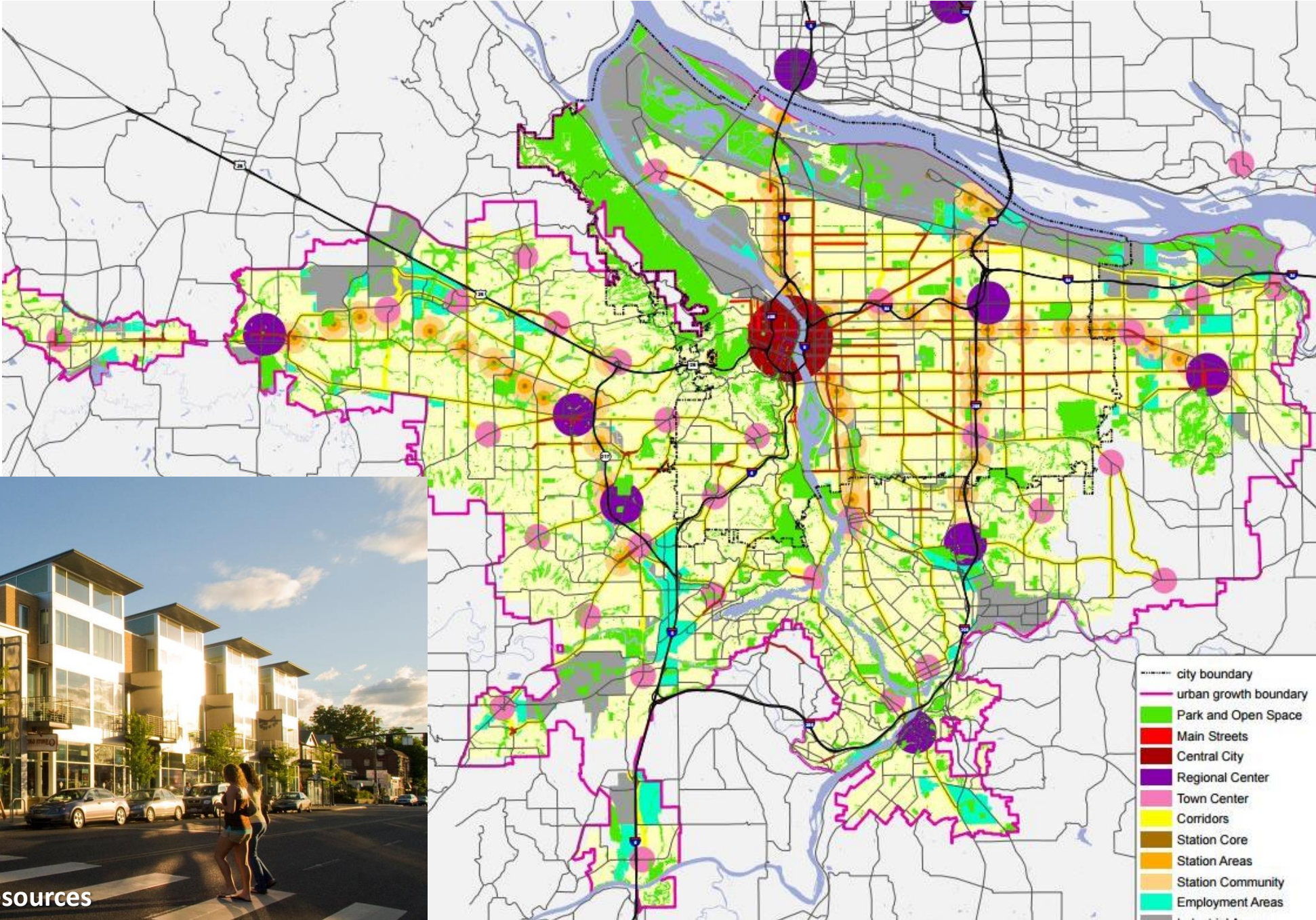
1860s



1900s



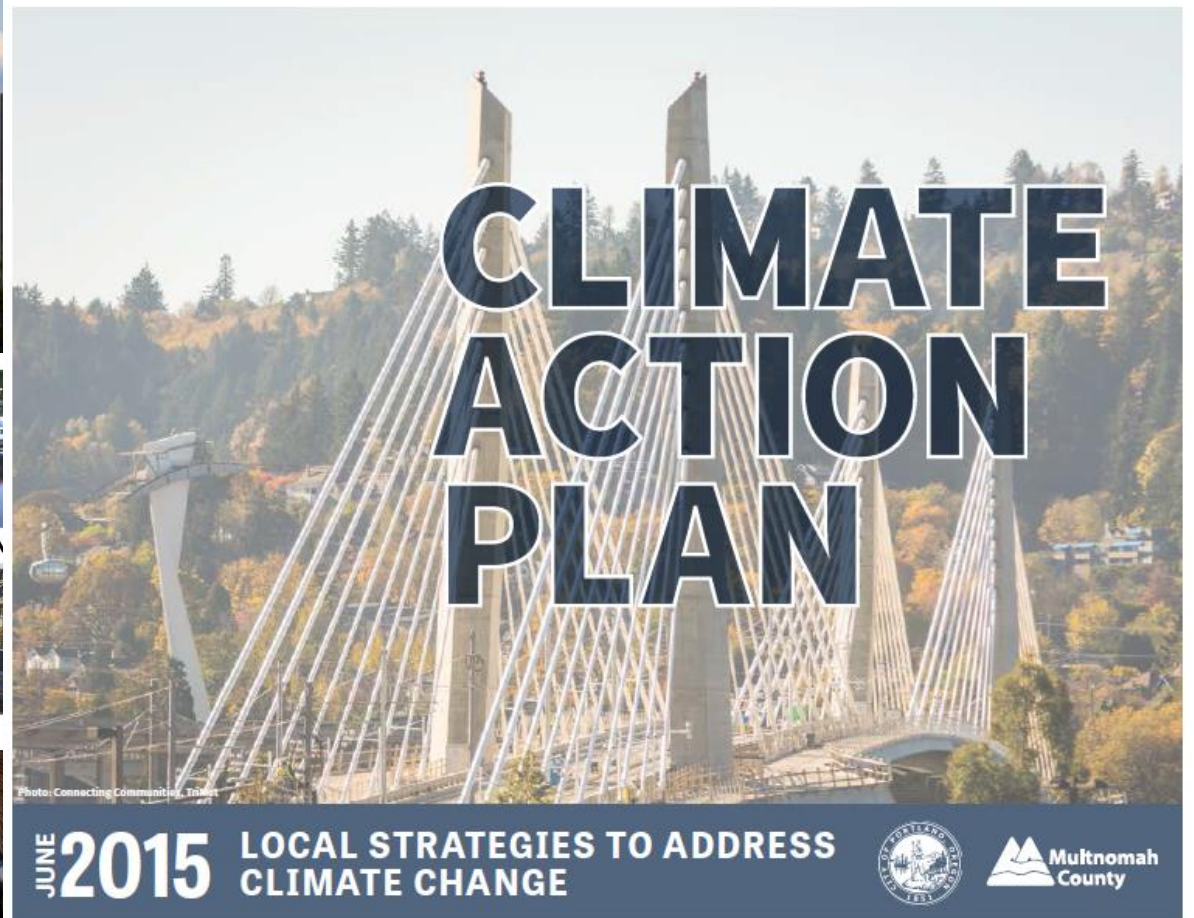
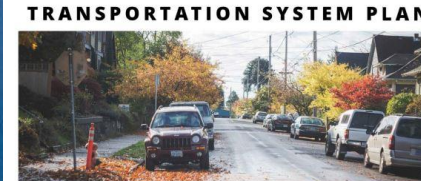
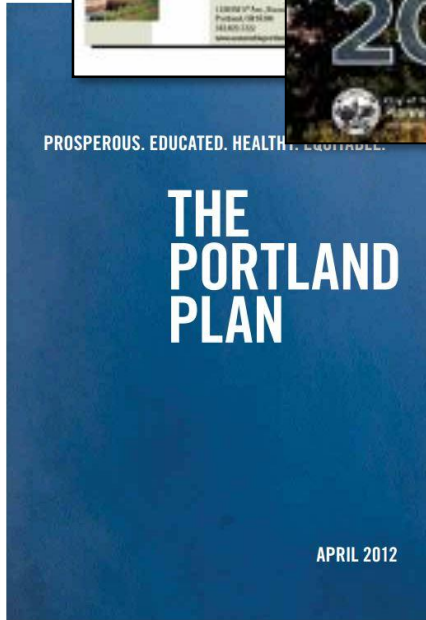
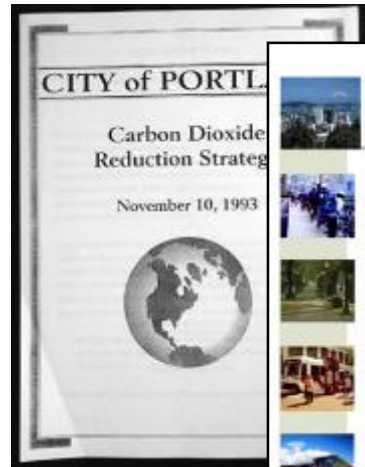
Planning Our Future



Urban Growth Boundary =
Land and streets as limited resources

Legacy of Leadership

1993 First city in the United States to create a local action plan for cutting carbon

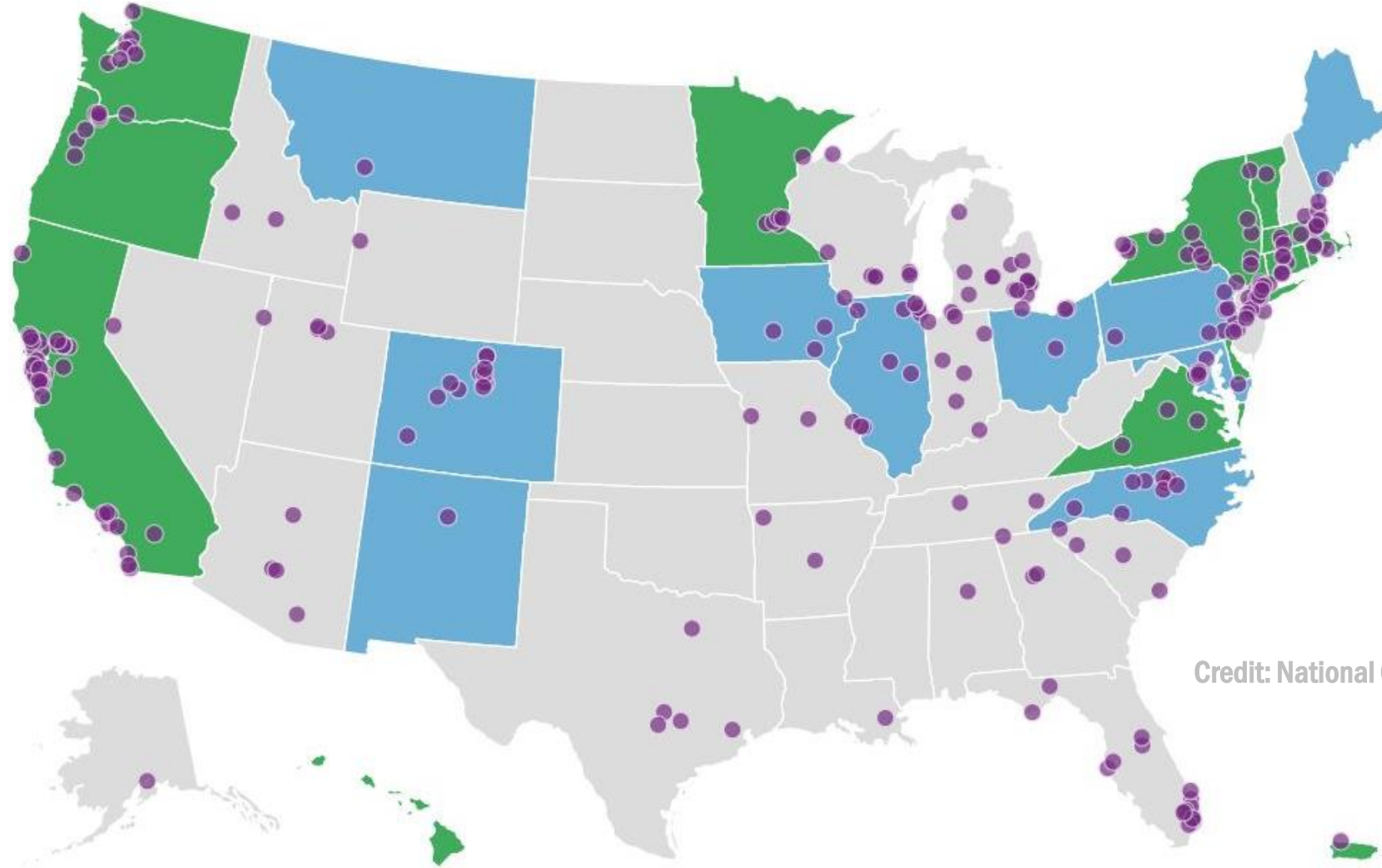


12 states have become members of the US Climate Alliance

US Climate Alliance

Following Paris Agreement

Mayors National Climate Action Agenda



Credit: National Geographic

REFERRED TO COMMISSIONER OF FINANCE AND ADMINISTRATION

RESOLUTION No.

Establish goal to transition Portland to 100% renewable energy by 2050 (Resolution)

WHEREAS, the scientific consensus is clear that human activities are primarily responsible for the warming that is accelerating global climate change, and

WHEREAS, changes in Oregon's climate are already being felt, with Oregon's mean temperature warming by 2.2°F per century during 1899-2015, and 2015 was the warmest year on record and 2016 was the wettest winter on record, and

WHEREAS, the Oregon Climate Change Research Institute has found that climate change poses a significant threat to Oregon's forestry, fisheries, water supplies and coastal resources, and impacts that are likely to include winter flooding, summer droughts, loss of shoreline, forest fires, diminished fish and wildlife habitat, retreating glaciers, decreased snowpack, increased disease vectors and invasive species, urban heat islands, and

WHEREAS, the City of Portland's climate future is expected to be characterized by hotter, drier summers with more high-heat days, and warmer winters with more intense rain events, Oregon's mean annual temperature is projected to increase by up to 10.7°F by the 2080s (compared to the 1970-1999 average) if we don't act, and

WHEREAS, the entire community will be impacted by climate change, but communities that already face existing socioeconomic and health inequities will be most severely impacted by these risks, including children, older adults, people of color, and people in poverty, and such communities will therefore require an investment in resilience that is proportionate and accountable to these more severe risks, and

WHEREAS, the newly confirmed EPA Administrator Scott Pruitt and President Trump are making decisions that are setting climate policy back decades by defunding environmental programs, attempting to reneg on the coal industry, greenwashing major pipeline projects (such as Keystone XL and Dakota Access), attacking the Clean Power Plan, and weakening EPA's commitment to environmental justice, and

WHEREAS, the Oregon Global Warming Commission concluded in its 2017 report to the Legislature that Oregon is not on track to achieve its statutory greenhouse gas reduction goals, specifically to reduce emissions by 10 percent by 2020 and by 75 percent by 2050, and

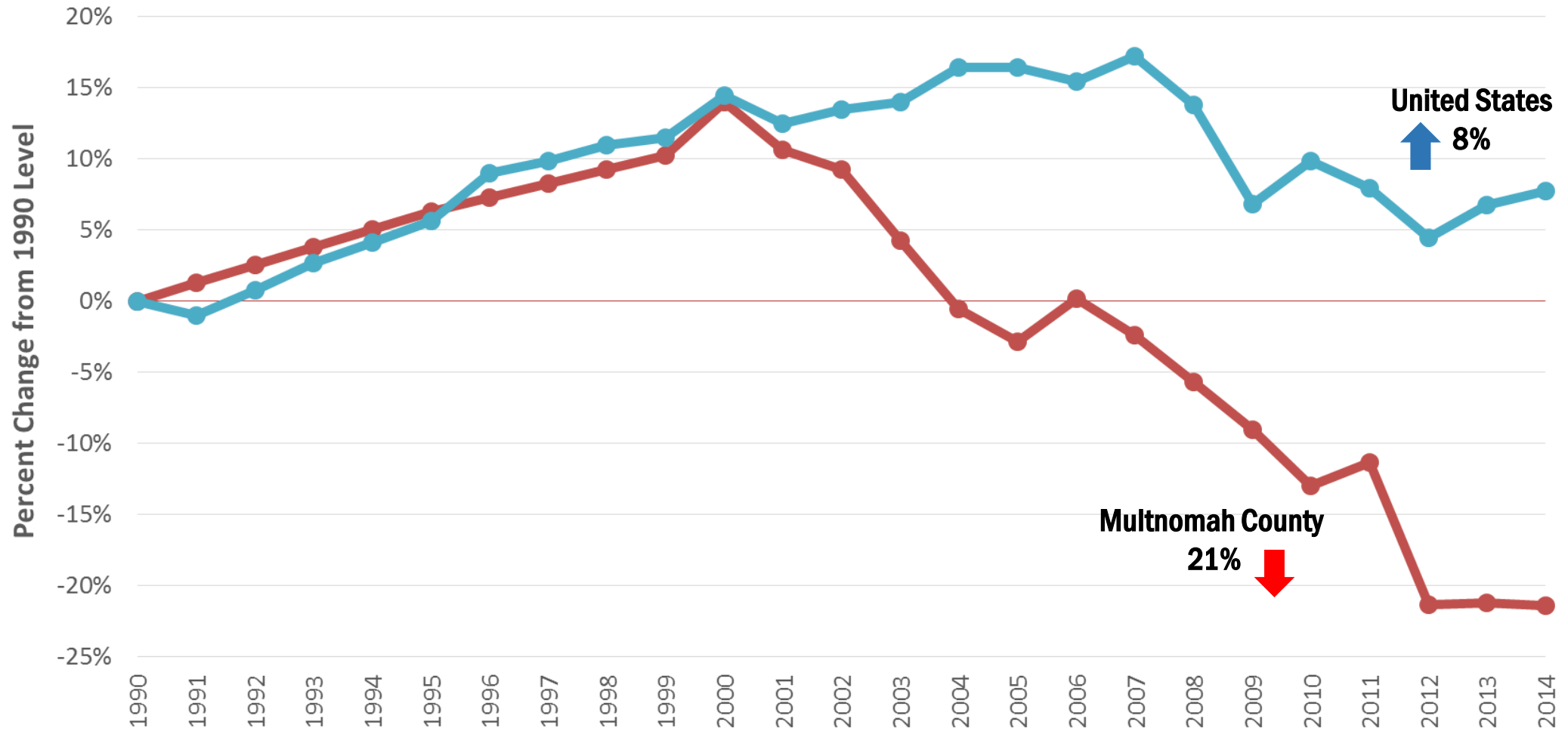
WHEREAS, the City of Portland has committed to policies opposing new fossil fuel infrastructure because of the inherent dangers to health and safety in extraction, transport, storage, and combustion of fossil fuels which are exacerbated by the specific seismic profile of this region, and

WHEREAS, the economic opportunities presented by a clean energy transition far outweigh the opportunities to expanding the fossil fuel economy, and

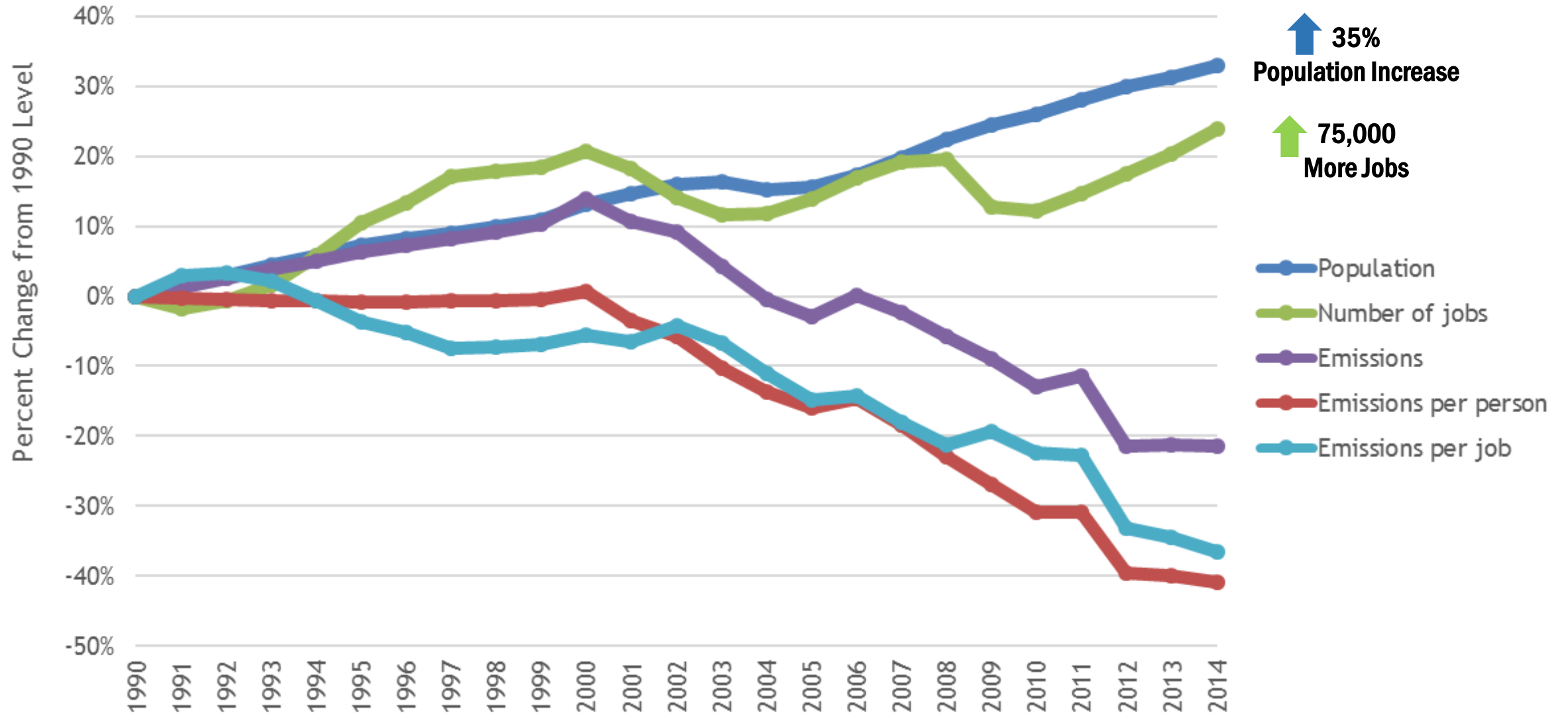
April 27th 2017 - Established goal to transition Portland to 100% renewable energy by 2050 (Resolution)

We're on our way

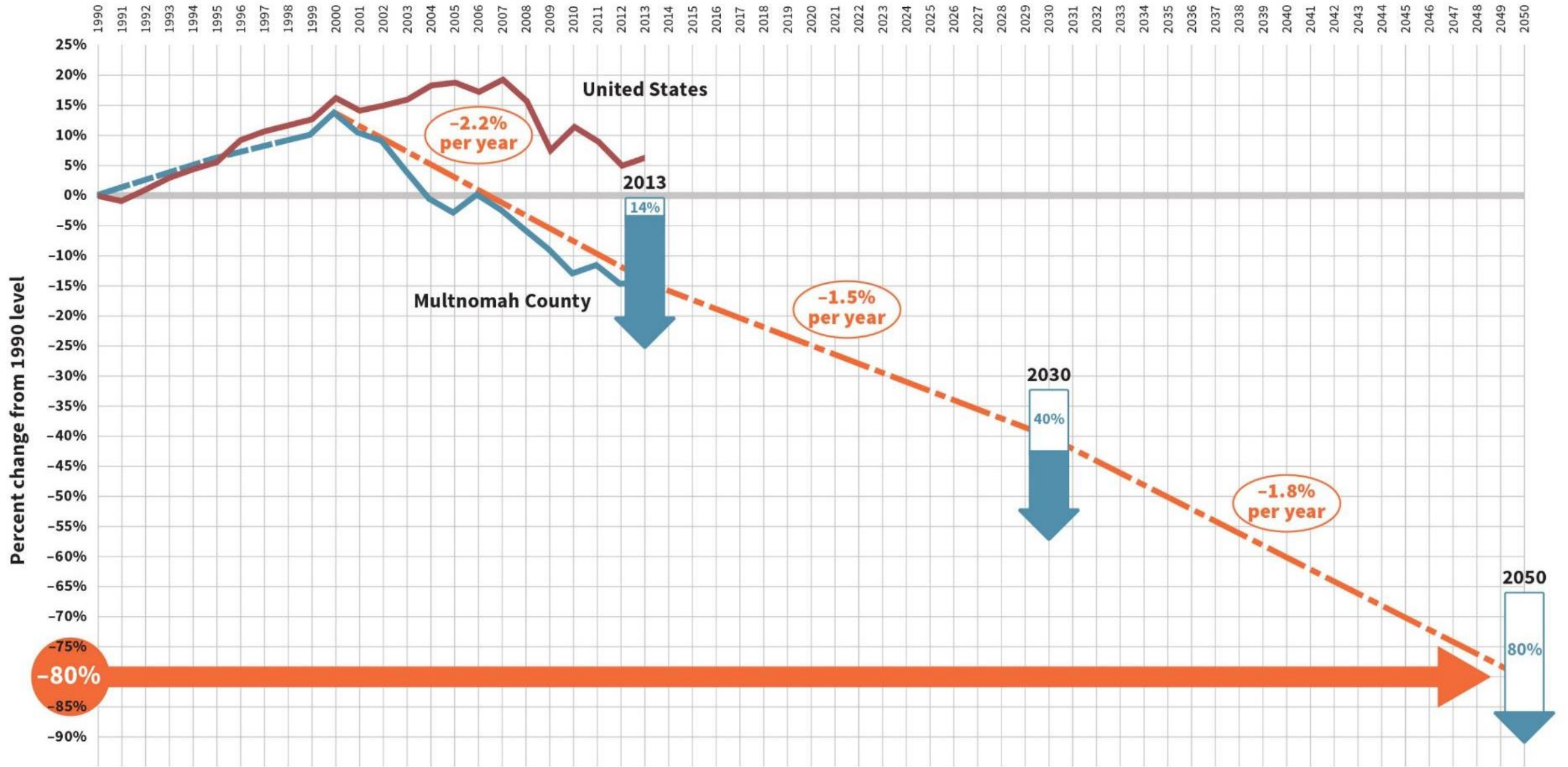
CARBON EMISSIONS TREND



Population and jobs up, carbon emissions down

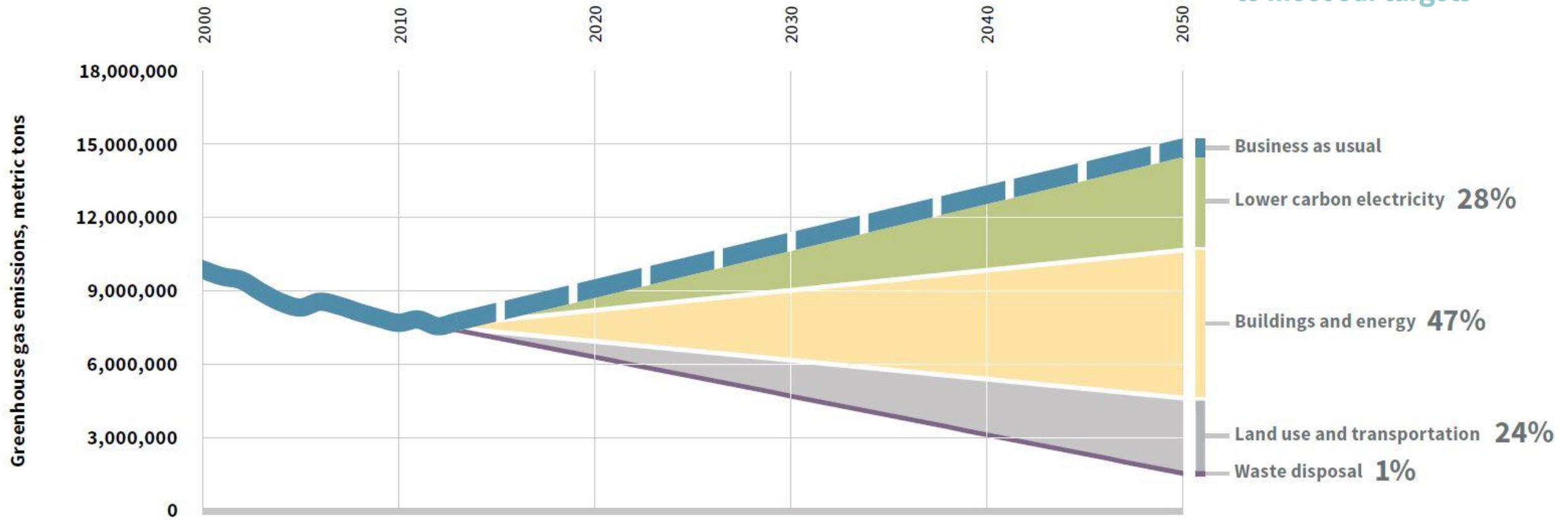


We still have work to do...



We still have work to do...

Where reductions in GHGs need to come from to meet our targets



Scoring home energy



Require disclosure of home energy scoring when listing for sale

Benchmarking commercial energy performance



Require tracking and reporting for buildings 20,000 SQFT or larger

Inclusionary Housing Requirement

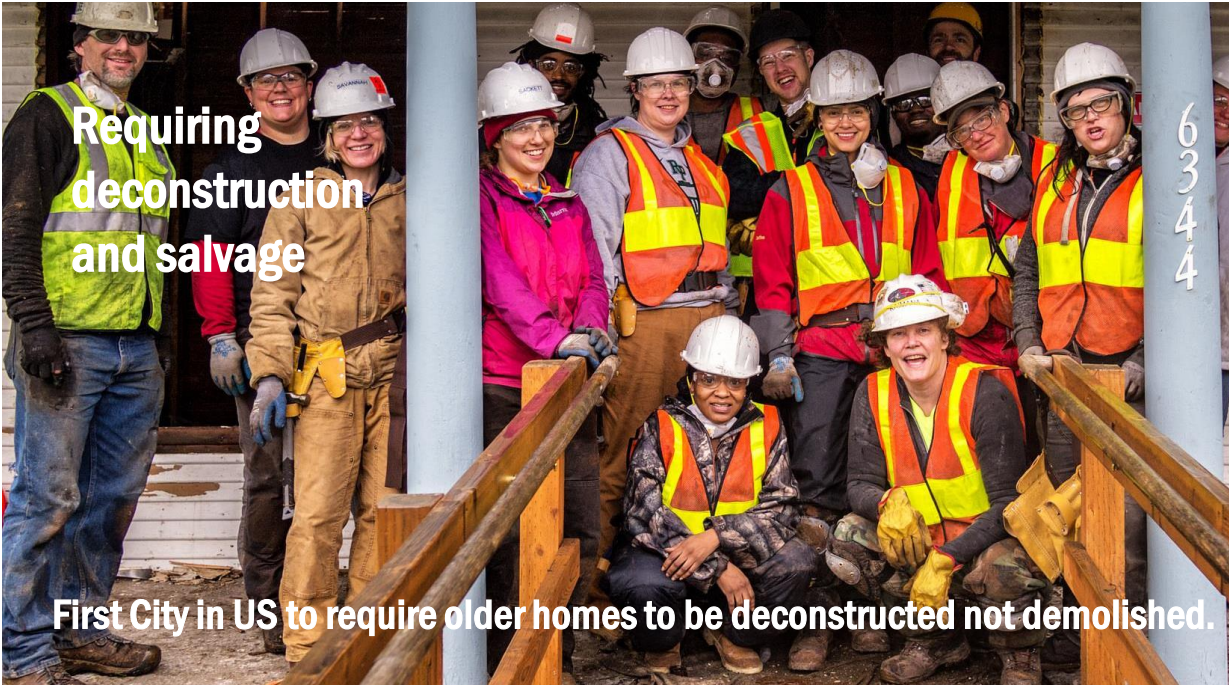


2017 Launched Inclusionary Zoning requirements

Financing energy efficiency



PropertyFit Program makes it easier for renewable energy projects



Requiring deconstruction and salvage

First City in US to require older homes to be deconstructed not demolished.

6344



Restricting fossil fuel infrastructure

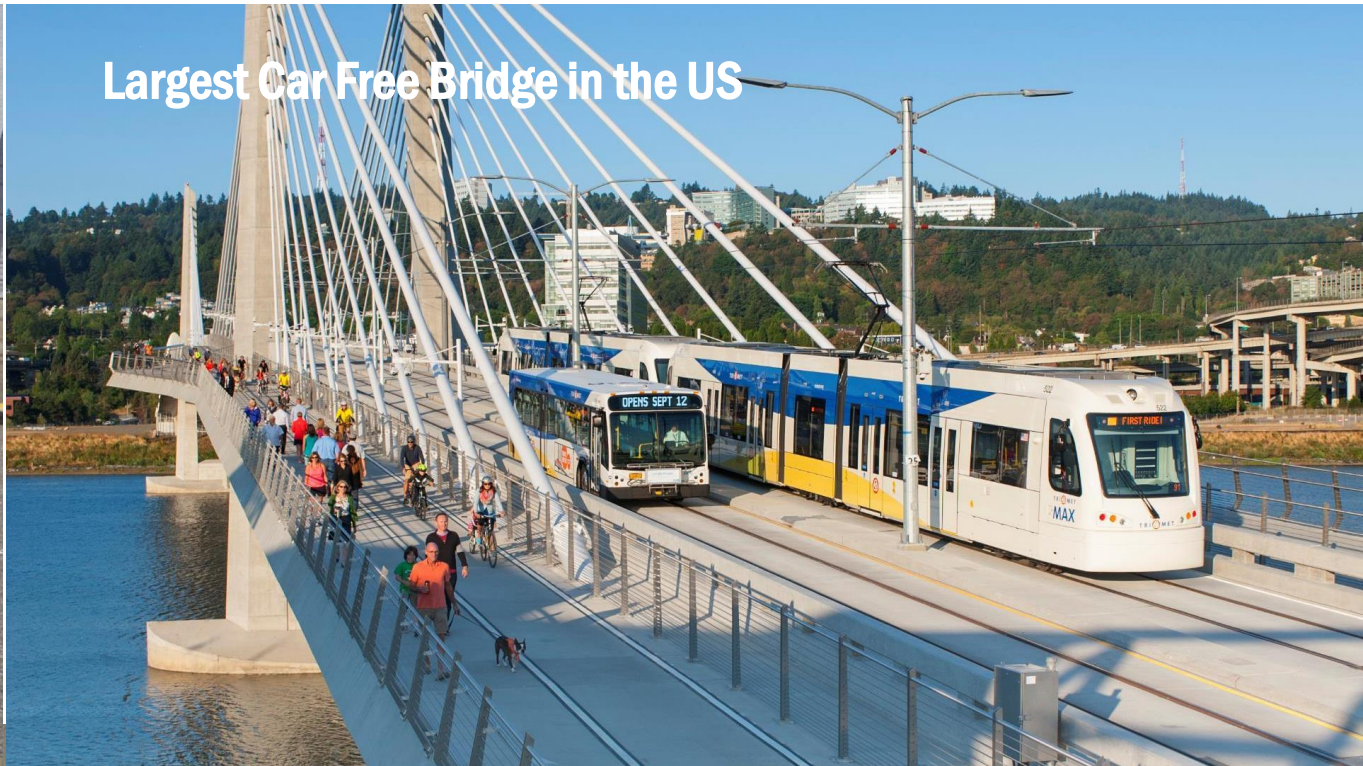
Zoning Code restricts expansion of storing and transporting fossil fuels



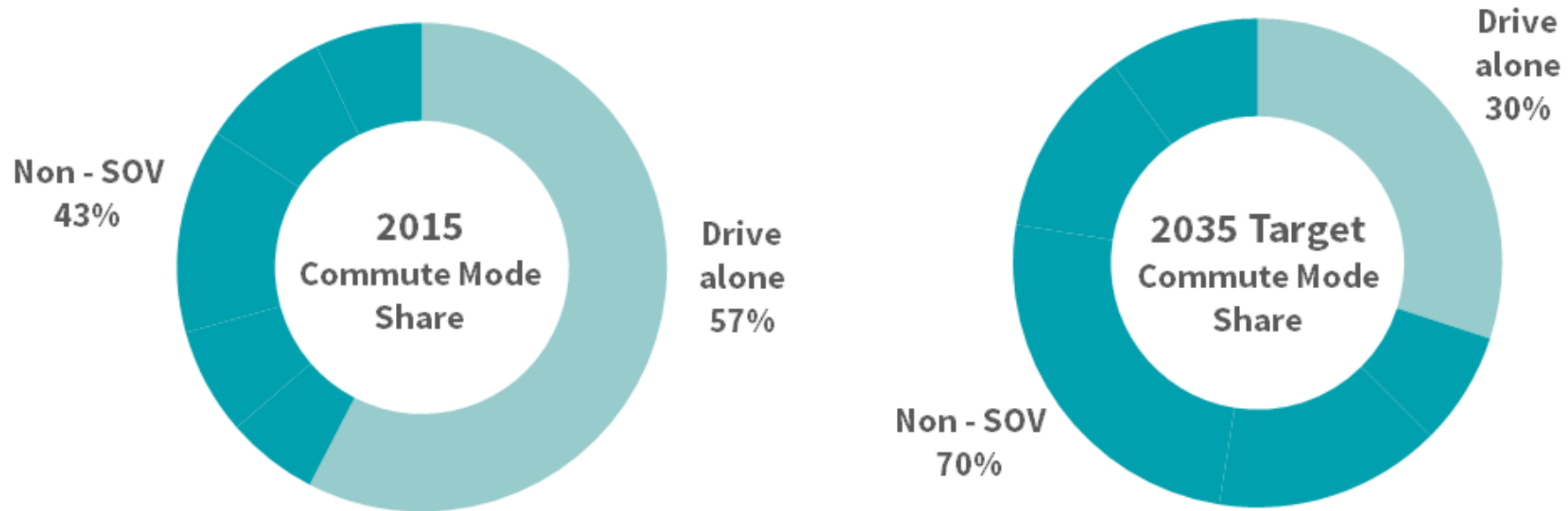
Reducing garbage

Portlanders recycle or compost 70% of household waste

Reducing landfill waste by 1/3

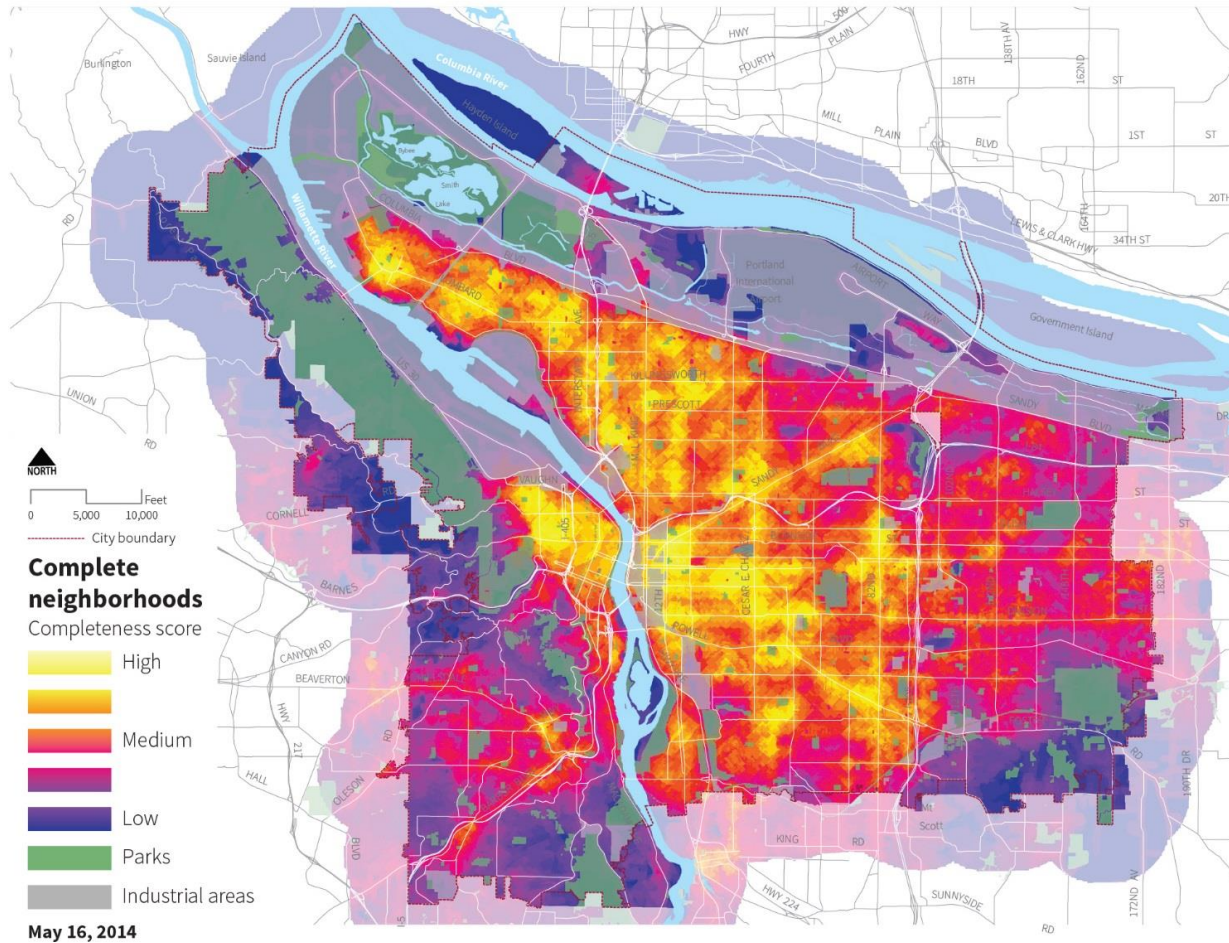


Still a ways to go

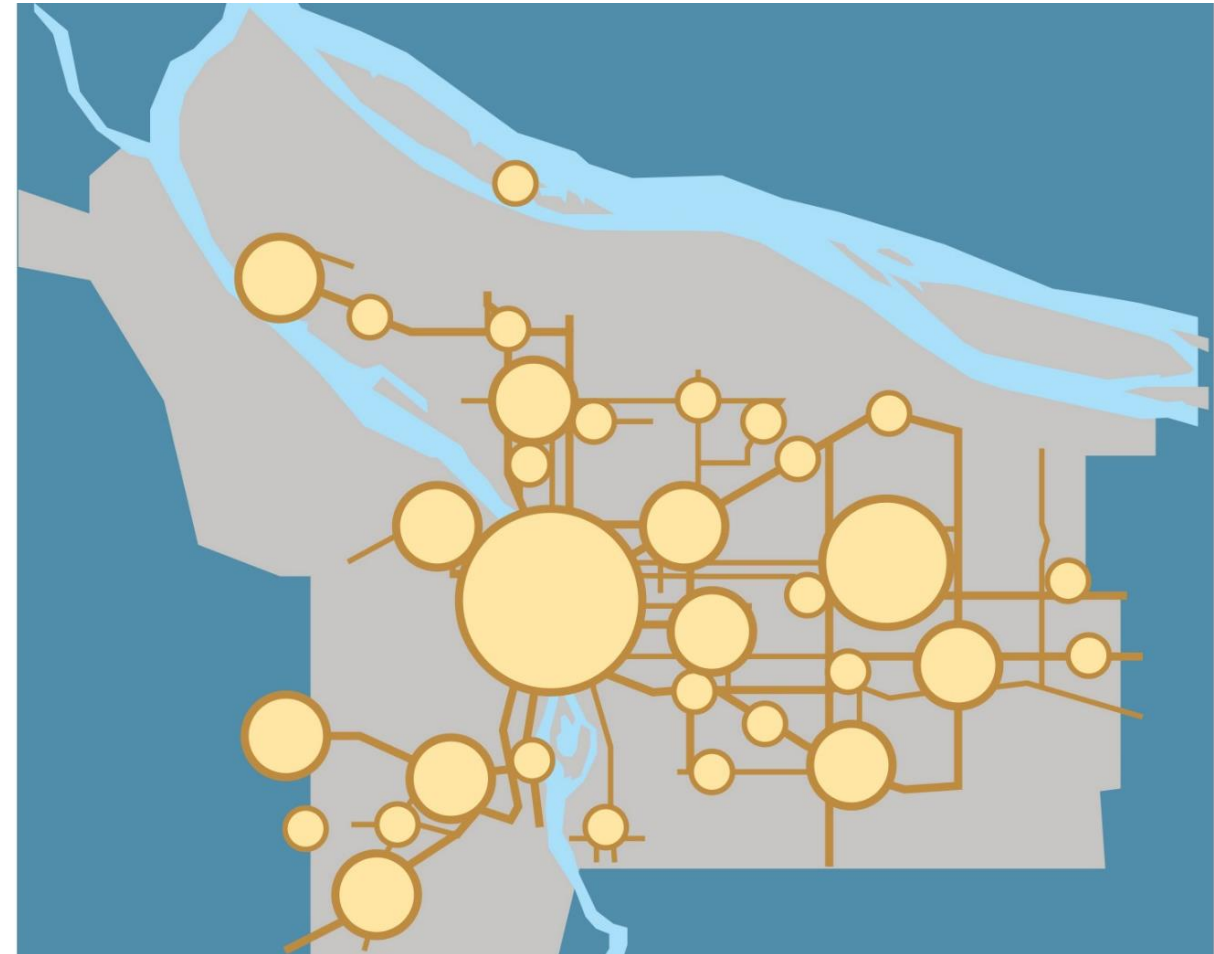


- Land Use Strategy
- Build the networks with a focus on Vision Zero: bike, pedestrian, and transit
- Congestion pricing, smart autonomous vehicles

Complete neighborhoods



Focusing growth & development



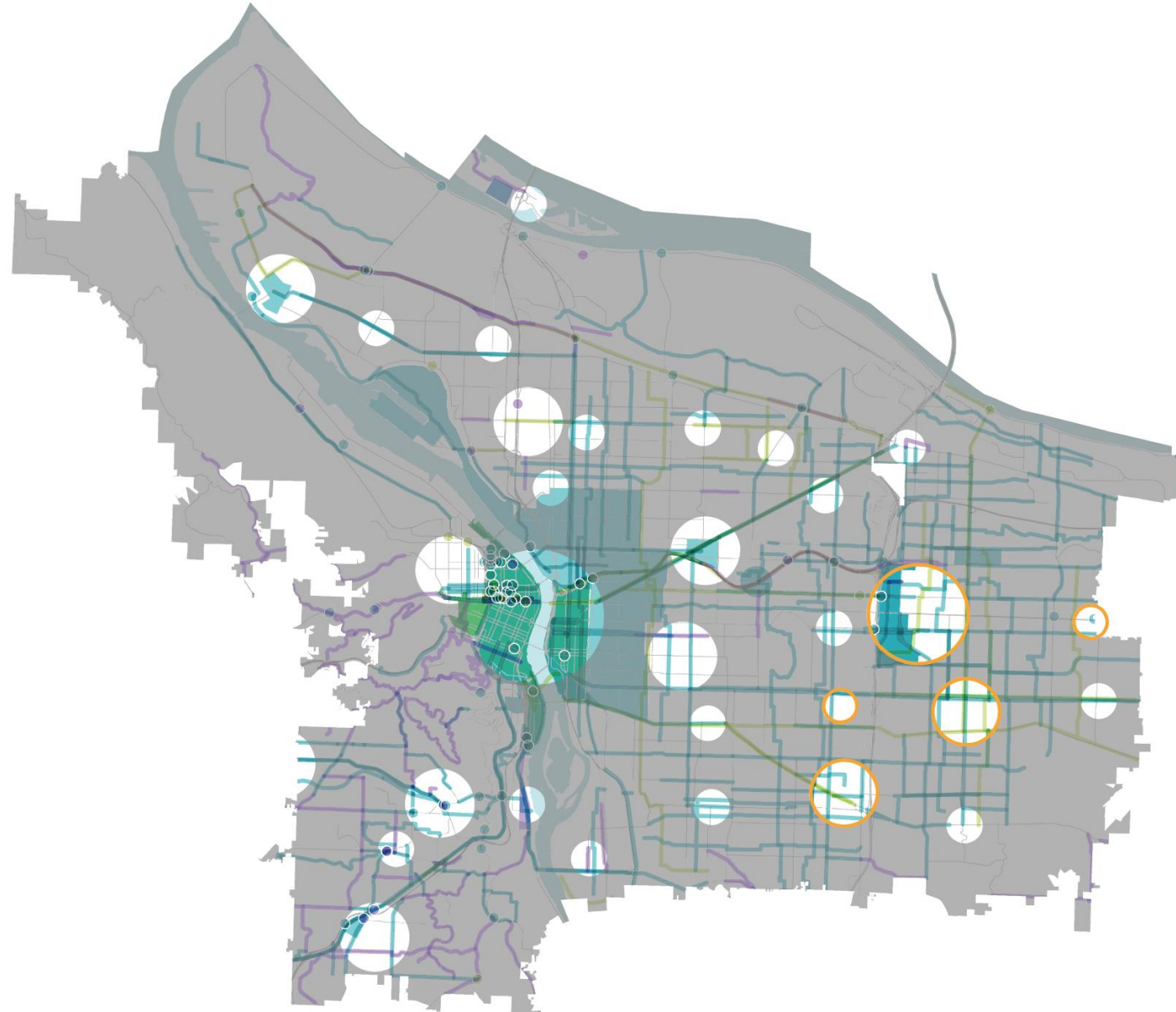
Investing in a balanced transportation system

Transportation investment supports key places

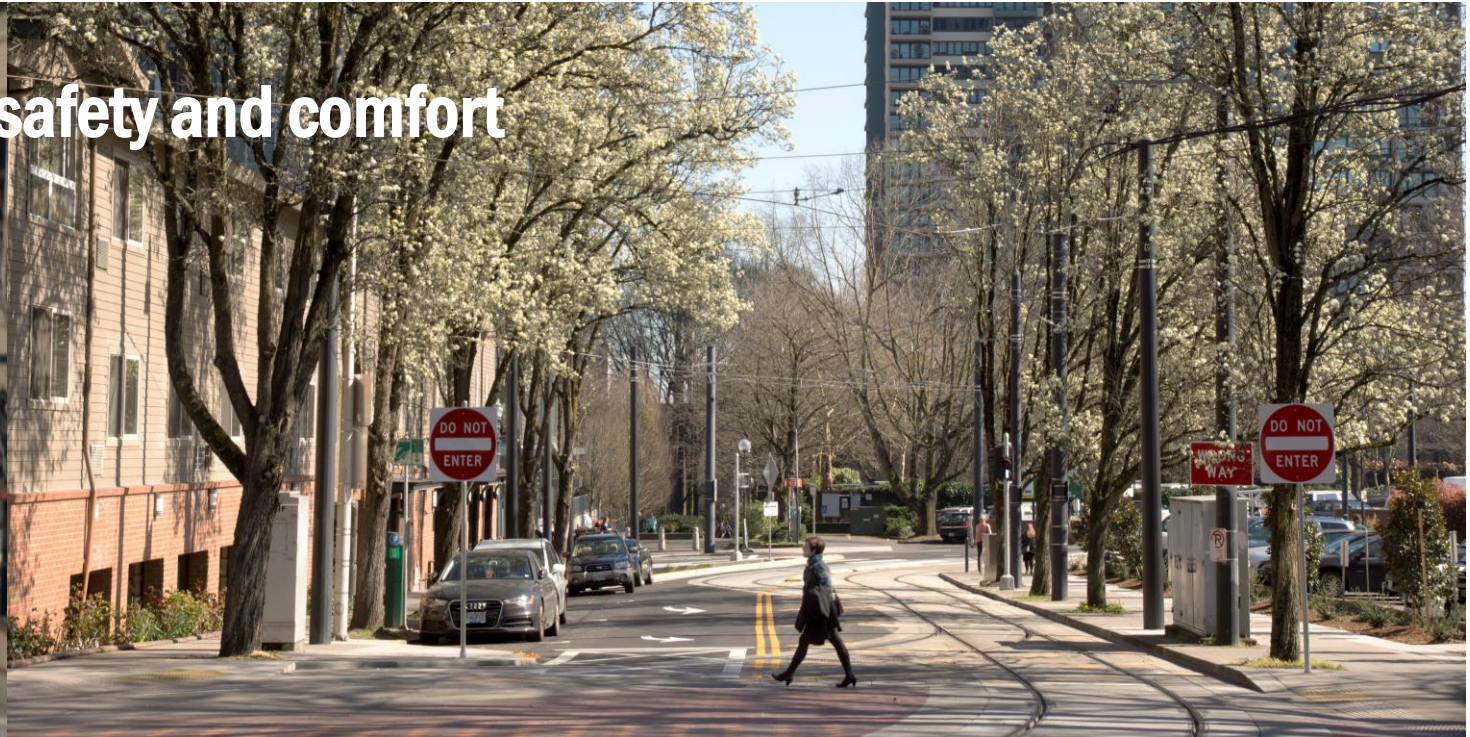
Offers more choices for short trips

- **Walking:** Fixing gaps and improving safety and comfort
- **Bicycle:** Creating an All Ages and Abilities Network
- **Transit:** Expanding rail network and supporting bus system speed and reliability
- **Freight:** Improving logistics and last mile mobility

Saves space for longer trips and trips that must use motor vehicles



Walking: Fixing gaps and improving safety and comfort





Bicycle: Creating an "All Ages and Abilities Network"





Transit: Expanding rail network and supporting bus system speed and reliability



Freight: Emphasizing Water and Rail Freight Improving logistics systems and last mile delivery





Policy Innovations

Smart Autonomous Vehicle Initiative



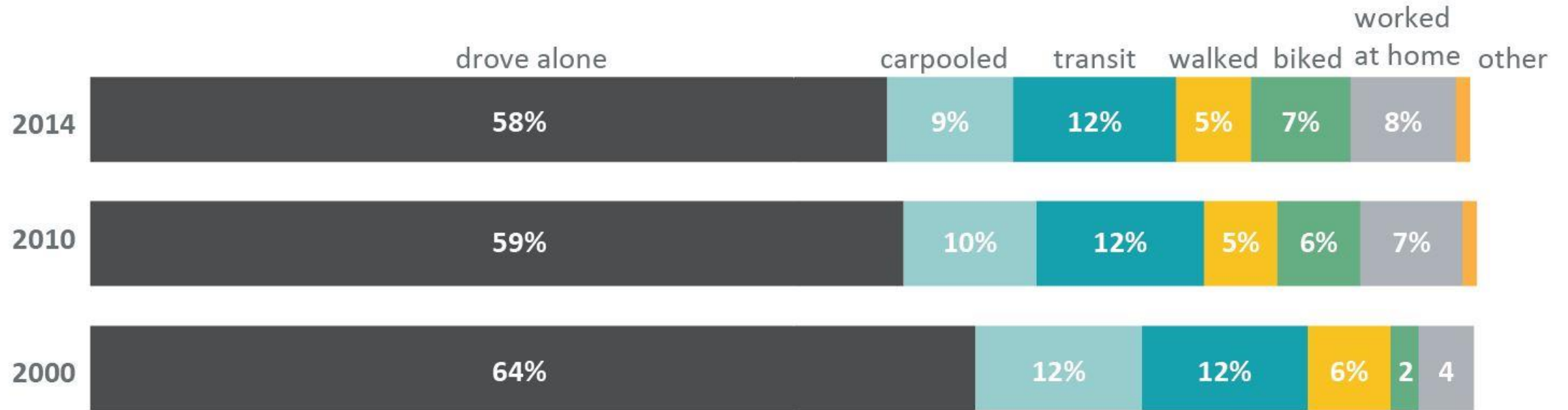
Congestion Pricing



Mobility is changing

How Portland residents got to work

Sources: Census 2000, American Community Survey 2010, 2014



Come Visit!

